



## **Thermal & Optical Bi-spectrum Network Camera**

### **Quick Instruction Manual**

\*Please note that the volume can only be adjusted through the internal PC speakers. If you would like to lower it, adjust it through the volume settings at the bottom right of the taskbar.



## Content

1. Product Introduction .....	3
1.1 Product Introduction .....	3
1.2 Product Appearance.....	3
2. Device Installation .....	4
2.1 Installation Position .....	4
2.2 Installation Environment Standard.....	4
3. Quick Instructions .....	4
3.1 Device Connection .....	4
3.2 AI Thermal Imaging Screening Sytem.....	5
3.2.1 Main Interface Introduction .....	5
3.2.2 Snapshot Folder .....	5
3.2.3 Thermal Imager Camera Settings Introduction .....	6
4. Device Upgrade .....	7
4.1 Web Upgrade.....	7
4.2 Tool Upgrade Program.....	7

## 1. Product Introduction

### 1.1 Product Introduction

This Intelligent AI binocular thermal imaging system is composed of AI binocular temperature detecting and AI thermal imaging screening system. Integrating high accuracy thermal temperature detecting sensor, built-in intelligent face capture algorithm and ISP image processing technology. The device features consist of face detection, temperature detection and face image capturing snapshot. The AI thermal imaging screening system can accurately detect body temperature, capturing face pic and create records for tracking and tracing purposes. It can effectively help to monitor and detect body temperature at entrances or exits which can be widely use at schools, commercial or residential buidlings, and metro or railway stations thus contributing effcent prevention during this epidemic crisis.

### 1.2 Product Appearance



### 1.3 Device Interface Function Definition

Interface No.	Interface Name	Functional Indicators
1	Power Interface	12VDC Adapter Port
2	Network Interface	RJ45 Network Interface Port
3	Relay Interface	+: NO Normally Open Port -: COM Public Port
4	Audio Interface	1: Audio Input 2: Audio Ground 3: Audio Output 4: Empty

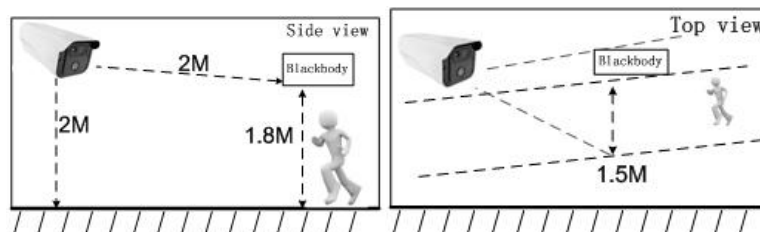
## 2. Device Installation

### 2.1 Installation Position

1. The Thermal Imager Camera should be position in front of the aisle facing entrances or facing backwards for exits for temperature screening and image capture snapshots;
2. Installation height recommend 2 meters or higher with an overlook view angle of  $0^{\circ}\sim 15^{\circ}$ ;
3. For better accuracy body temperature screening, recommended distance range is from 1.5 to 2.5 meters which has been strictly tested for optimum results.

### 2.2 Installation Environment Standard

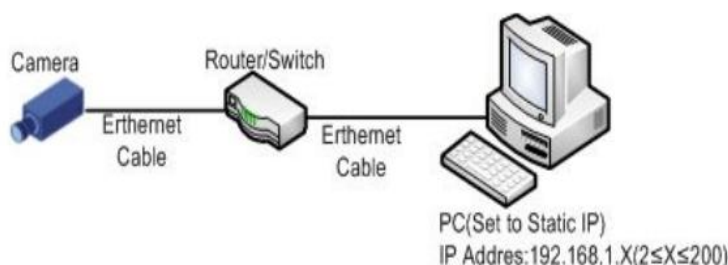
1. Illumination Enviroment Requirements: Postion camera to ensure no backlight, light refection on human face, or shadows for better face capturing results. If the face image snapshot is not bright or sharp, it is recommeded to increase or reposition the Thermal Imager camera (General Suggested 250~800 Lux) .
2. Light and Wind Enviroment Requirements: The Thermal Imager Device is suggested to be installed indoor, ensuring there is no wind current between device and human. Avoid direct sunlight or high temperature devices to prevent screening temperature inaccuracy.



## 3. Quick Instructions

### 3.1 Device Connection

Power the Thermal Imager camera and connect with RJ45 network cable to the LAN port available on PC or Laptop. Log in to software, User Name is Admin with default password 123456. Click “connect” at top right corner software interface (Diagram 2). The Thermal Imager camera dafault IP address is **192.168.1.18** thus if software does not detect the camera, please check if the computer IP address is 192.168.1.1. If IP address amendment is required, open the search tool application available in the computer to make amendment to the current IP Address. Camera can be directly connected to a computer, or connected to a network as the figure below, then connect the power adaptor and power-on.



### Login

User Name: admin

Password: \*\*\*\*\*

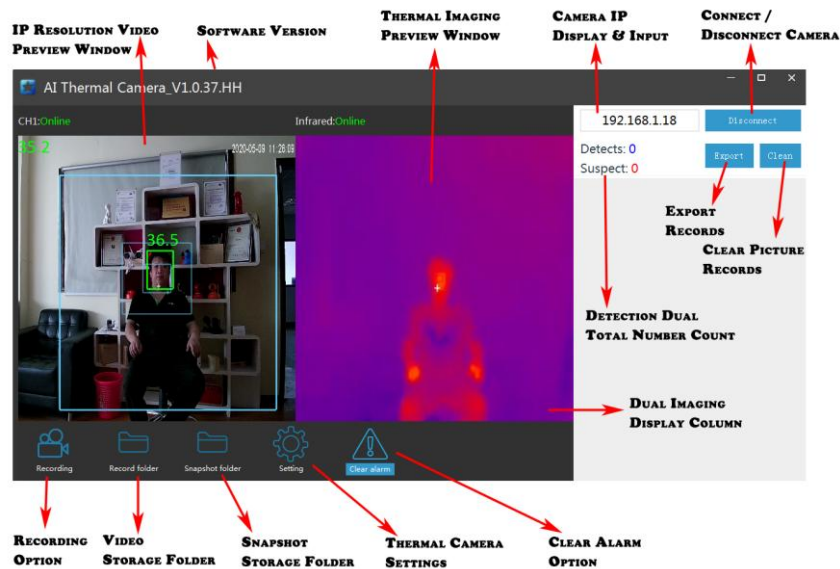
OK

Change password

### 3.2 AI Thermal Imaging Screening System

User can use AI thermal imaging screening system software to connect device, preview, setting, alarm clean, snapshot pic preview, export records, etc operation.

#### 3.2.1 Main Interface Introduction



**【Video Preview Window】** : Dual screen view (Optical and Thermal imaging)

**【IP Display & Input Box】** : Input device's IP address. Default IP address is 192.168.1.18;

**【Connect/Disconnect Device Button】** : Connect or Disconnect Thermal Camera option;

**【Export】** : Export counting records and saved as excel file;

**【Clean】** : Clear the total records.

**【Detection Total Number Count】**: Counting the total numbers of face capture and suspect;

**【Dual Imaging Display Column】** :Snapshot & Temperature record display;

**【Recording Option】** & **【Recording Storage Folder】** : Record Video option & Folder;

**【Snapshot Storage Folder】** : Click the snapshot folder to check saved captured face;

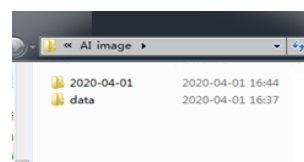
**【Camera Settings】** : Modify the settings for face capture and Cancel Alarm option;

**【Detects】** : Total numbers counts of face capture and shows;

**【Suspect】** : Total number counts above high temperature limit setting;

#### 3.2.2 Snapshot Folder

To click the **【Snapshot Folder】** , Snapshots of all captured face pics. The folder filed by date.





## 4. Device Upgrade

Users can use browser or PC tool for upgrade;

Notice: Brower upgrade package suffix is .ifu. PC tool upgrade package suffix is .bin

### 4.1 Web Upgrade

Notice: Only IE browser, QQ browser, and 360 security browser is workable; IE Edge browser, 360 speed browser are not able to use.

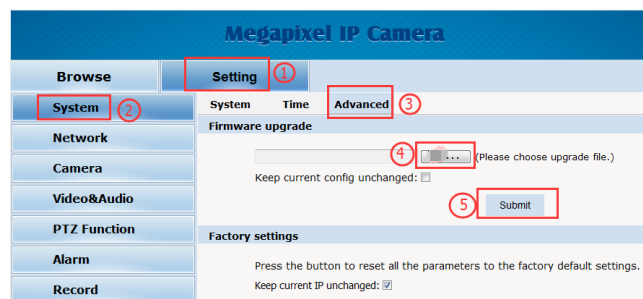
Step 1: Open Browser, input device IP address, and input the user name "admin" and no password.



Step 2: Click "setting" - "Setting" - "Maintain" to enter into the upgrade interface;

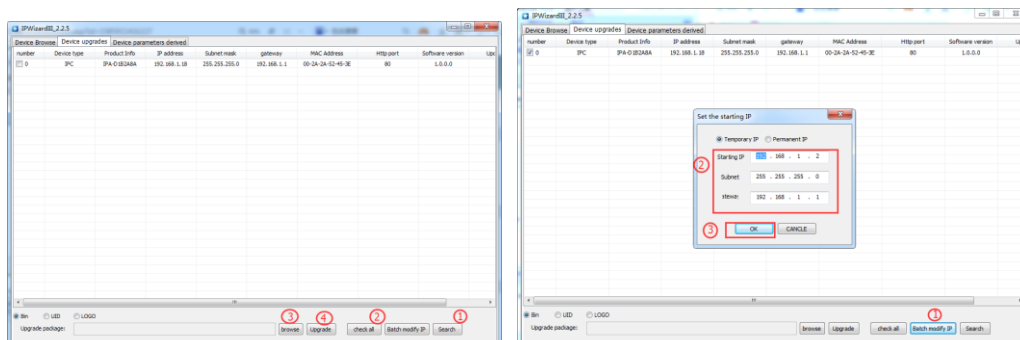
Step 3: Click "Browse" to choose "app.ifu" upgrade file;

Step 4: Click "Upload" button to start upgrading, after upgrade completed, the web page will auto-refresh.



### 4.2 Tool Upgrade Program

Step 1: Open the PC to search tool **IPWIZARD** and above version, select the device and upgrade directly for single device;



Step 2: For multi-devices batch upgrade, user need to modify the default IP address to different one to avoid IP address collision. Take a example as below pic shows: